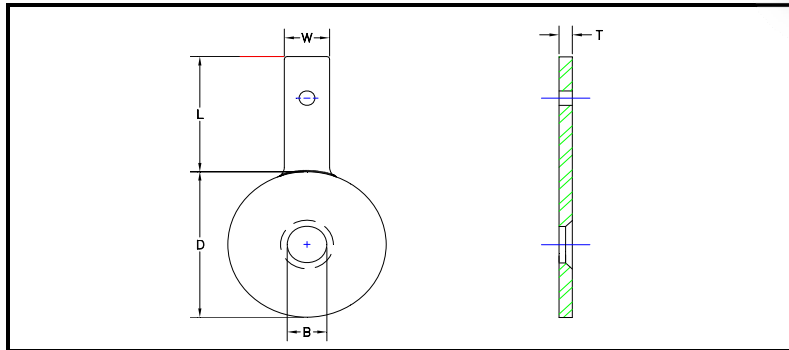




Paddle-Type Orifice plates

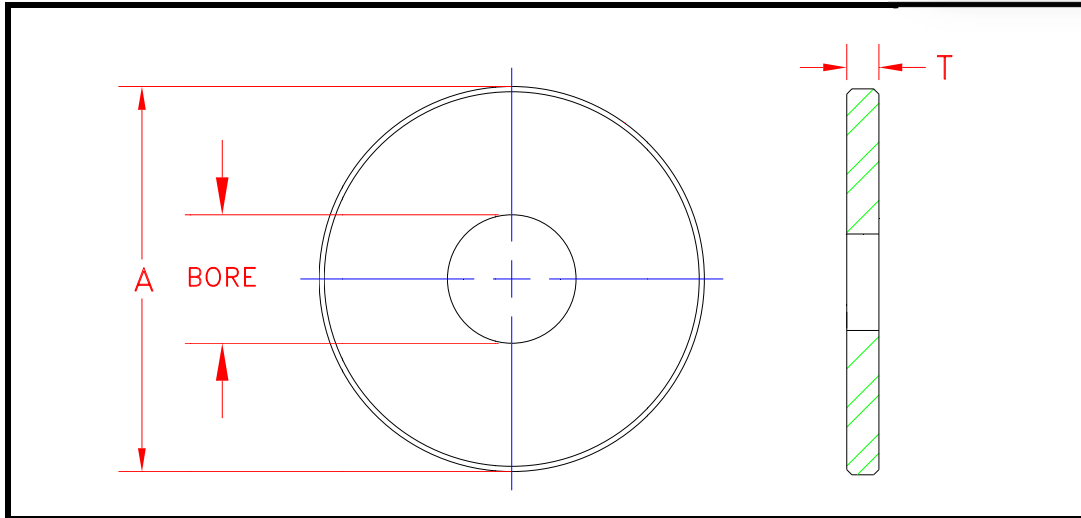
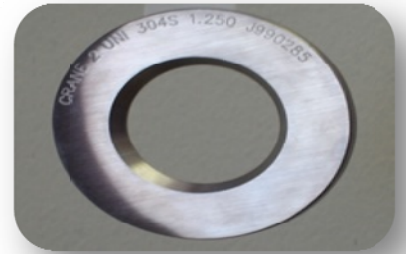


Crane Style 520 paddle-type orifice plates are Manufactured to meet or exceed AGA, ASME, ISA and ANSI specifications. All plate are furnished in line sizes from 1/2" to 36" and are available with the following type bores: bore and bevel, bore and counter bore, segmental, eccentric and quarter round.

All standard line sizes are carried in stock available for immediate shipment. Plates also can be manufactured to customer specifications.

Stainless 304 and 316 are stock materials; Monel, Hastelloy B & C, Titanium, Nickel and Other special materials are available upon request.

LINE SIZE	150# ANSI D	300# ANSI D	400# ANSI D	600# ANSI D	900# ANSI D	1500# ANSI D	2500# ANSI D	ALL RATINGS L	ALL RATINGS W	ALL RATINGS T
1/2"	1 7/8"	2 1/8"	2 1/8"	2 1/8"	2 1/2"	2 1/2"	2 3/4"	4"	1"	1/8" OR 1/4"
3/4"	2 1/4"	2 5/8"	2 5/8"	2 5/8"	2 3/4"	2 3/4"	3"	4"	1"	1/8" OR 1/4"
1"	2 5/8"	2 7/8"	2 7/8"	2 7/8"	3 1/8"	3 1/8"	3 3/8"	4"	1"	1/8" OR 1/4"
1 1/4"	3"	3 1/4"	3 1/4"	3 1/4"	3 1/2"	3 1/2"	4 1/8"	4"	1"	1/8" OR 1/4"
1 1/2"	3 3/8"	3 3/4"	3 3/4"	3 3/4"	3 7/8"	3 7/8"	4 5/8"	4"	1"	1/8" OR 1/4"
2"	4 1/8"	4 3/8"	4 3/8"	4 3/8"	5 5/8"	5 5/8"	5 3/4"	4"	1"	1/8" OR 1/4"
2 1/2"	4 7/8"	5 1/8"	5 1/8"	5 1/8"	6 1/2"	6 1/2"	6 5/8"	4"	1"	1/8" OR 1/4"
3"	5 3/8"	5 7/8"	5 7/8"	5 7/8"	6 5/8"	6 7/8"	7 3/4"	4"	1"	1/8" OR 1/4"
4"	6 7/8"	7 1/8"	7"	7 5/8"	8 1/8"	8 1/4"	9 1/4"	4"	1"	1/8" OR 1/4"
5"	7 3/4"	8 1/2"	8 3/8"	9 1/2"	9 3/4"	10"	11"	4"	1"	1/8" OR 1/4"
6"	8 3/4"	9 7/8"	9 3/4"	10 1/2"	11 3/8"	11 1/8"	12 1/2"	4"	1"	1/8" OR 1/4"
8"	11"	12 1/8"	12"	12 5/8"	14 1/8"	13 7/8"	15 1/4"	6"	1 1/2"	1/8" OR 1/4"
10"	13 3/8"	14 1/4"	14 1/8"	15 3/4"	17 1/8"	17 1/8"	18 3/4"	6"	1 1/2"	1/8" OR 1/4"
12"	16 1/8"	16 5/8"	16 1/2"	18"	19 5/8"	20 1/2"	21 5/8"	6"	1 1/2"	1/8" OR 1/4"
14"	17 3/4"	19 1/8"	19"	19 3/8"	20 1/2"	22 3/4"	•	6"	1 1/2"	1/8" OR 1/4"
16"	20 1/4"	21 1/4"	21 1/8"	22 1/4"	22 5/8"	25 1/4"	•	6"	1 1/2"	1/8" OR 1/4"
18"	21 1/2"	23 3/8"	23 1/4"	24"	25"	27 5/8"	•	6"	1 1/2"	1/4"
20"	23 3/4"	25 5/8"	25 3/8"	26 3/4"	27 3/8"	29 5/8"	•	6"	1 1/2"	1/4"
22"	26"	27 3/4"	27 1/2"	28 7/8"	•	•	•	6"	1 1/2"	1/4"
24"	28 1/8"	30 3/8"	30 1/8"	31"	32 7/8"	35 1/2"	•	6"	1 1/2"	1/4"
30"	34 5/8"	37 3/8"	37 1/4"	38 1/8"	•	•	•	6"	1 1/2"	1/4"
36"	41 1/8"	43 7/8"	43 7/8"	44 3/8"	•	•	•	6"	1 1/2"	1/4"



SIZE IN INCHES	PLATE O.D A	PLATE THK.B (INCHES)	BLANK WT. (LBS)	LINE SIZE (INCHES)	PLATE O.D A	PLATE THK. B (INCHES)	BLANK WT. (LBS)
3/4	1.125	1/8	.06	14*	14.563	1/4	11.91
1	1.312	1/8	.06	16*	16.563	3/8	15.41
1 1/2	2.000	1/8	.11	18*	18.563	3/8	18.45
2	2.437	1/8	.17	20*	20.563	3/8	22.78
2 1/2	2.812	1/8	.25	24*	24.500	3/8	32.80
3	3.437	1/8	.34	26*	26.750	3/8	62.00
4	4.406	1/8	.55	30*	30.750	1/2	112.00
6	6.437	1/8	1.18	34*	35.228	1/2	134.00
8	8.437	1/8	2.03	36*	38.00	1/2	156.00
10	10.687	1/4	6.41	42*	338.00	1/2	338.00
12*	13.079	1/4	9.61				

DIMENSIONS ARE FOR UNIVERSAL PLATES WITH VULCANIZED RUBBER SEAL RING. UNIVERSAL PLATES AND RUBBER SEAL RINGS ARE PRICED SEPARATELY

SIZE IN INCHES	PLATE O.D A	PLATE THK.B (INCHES)	LINE SIZE (INCHES)	PLATE O.D A	PLATE THK. B (INCHES)
12	12.593	1/4	20	20.000	3/8
14	14.000	1/4	24	24.000	3/8
16	16.000	3/8	26	26.000	3/8
18	18.000	3/8	30	30.000	1/2

DIMENSIONS FOR UNIVERSAL ORIFICE PLATES FOR USE IN 12" THROUGH 30" RTJ PLATE HOLDERS - 3/4" THROUGH 10" DIMENSIONS ARE THE SAME AS THOSE LISTED IN CHART #1