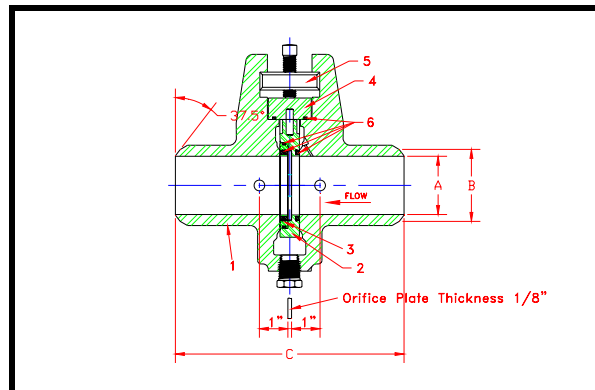




Flowmatic Orifice Fittings



CRANE ORIFICE FITTINGS

Crane orifice fittings are available in 150# through 600# pressures and are constructed of A216 WCB. A recent re-design of the fitting ensures complete compliance with AGA report #3 (ANSI/API 2530) requirements.

The carrier mechanism and orifice fitting have "O" rings which compress to allow a metal to metal fit between the machined surfaces. Precision machining of the carrier opening ensures perfect plate and bore alignment once the assembly is installed in the fitting. The ID of the carrier is machined to the identical ID of the orifice fitting bore to allow perfect alignment, thereby

improving accuracy and efficiency.

A wide range of orifice fittings are available in inventory, ready for immediate shipment.

	DIA. OF INTERNAL LINE BORE	DIA. OF HUB AT POINT OF WELDING	OVERALL FAC TO FACE	DIA. OF RAISED FACE	DIA. OF FLANGE	HEIGHT OF RAISED RACE
SIZE	A	B	C	D	E	F
150/600# S/40 FLANGE BY WELD W/RAISED FACE FLANGE FACING						
2"	2.067	2.375	8.000	3.625	6.500	.250
3"	3.065	3.500	9.000	5.00	8.250	.250
4"	4.026	4.500	10.000	6.187	10.750	.250
6"	6.065	6.625	11.500	8.500	14.000	.250

	DIA. OF INTERNAL LINE BORE	DIA. OF HUB AT POINT OF WELDING	OVERALL FAC TO FACE
SIZE	A	B	C
150/600# S/40 WELD BY WELD			
2"	2.067	2.375	7.250
3"	3.065	3.500	7.500
4"	4.026	4.500	9.000
6"	6.065	6.625	10.250