

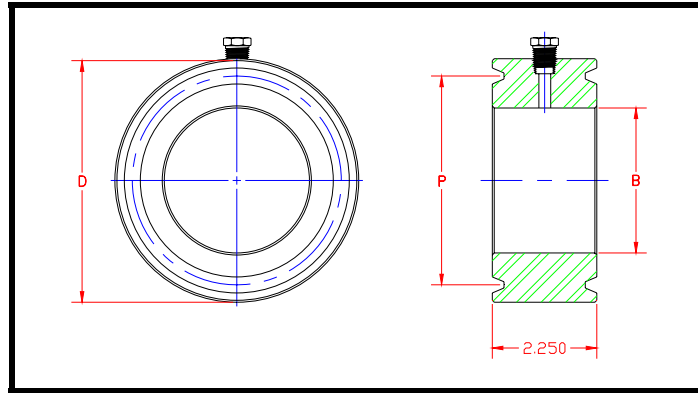
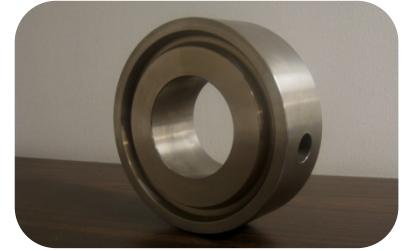
CRANE BLEED RINGS

Crane bleed rings are designed for in-line use between flanges or valves to relieve pressure and/or drain fluids. Standard sizes in both RTJ and raised face styles include 1" through 12" in ANSI ratings from 150# through 1500#

Standard connections are 1/2" NPT on all bleed rings; 3/4" NPT and socket-weld connections are also available. Carbon steel is standard material. Alloy, stainless steel and other materials are available per customer request.

LINE SIZE	150# (D)	300# (D)	600# (D)	900# (D)	1500# (D)	BORE (B)
1"	2 1/4"	2 3/4"	2 3/4"	3"	3"	1 1/8"
1 1/2"	3 1/4"	3 5/8"	3 5/8"	3 3/4"	3 3/4"	1 5/8"
2"	4"	4 1/4"	4 1/4"	5 1/2"	5 1/2"	2 1/8"
2 1/2"	4 3/4"	5"	5"	6 3/8"	6 3/8"	2 1/2"
3"	5 1/4"	5 3/4"	5 3/4"	6 1/2"	6 3/4"	3 1/8"
4"	6 3/4"	7"	7 1/2"	8"	8 1/8"	4 1/8"
6"	8 5/8"	9 3/4"	10 3/8"	11 1/4"	11"	6 1/8"
8"	10 7/8"	12"	12 1/2"	14"	13 3/4"	8"
10"	13 1/4"	14 1/8"	15 5/8"	17"	17"	10 1/8"
12"	16"	16 1/2"	17 3/4"	19 3/8"	20 1/4"	12"

RTJ BLEED RINGS



R NO.	SIZE & RATING	PITCH (P)	DIAMETER (D)	BORE (B)
R15	1" ----- 150#	1 7/8"	2 1/2"	1 1/8"
R16	1" ----- 300/600/900/1500#S	2"	2 13/16"	1 1/8"
R19	1 1/2" ----- 150#	2 9/16"	3 1/4"	1 5/8"
R20	1 1/2" ----- 300/600/900/1500#S	2 11/16"	3 5/8"	1 5/8"
R22	2" ----- 150#	3 1/4"	4"	2 1/8"
R23	2" ----- 300/600#S	3 1/4"	4 1/4"	2 1/8"
R24	2" ----- 900/1500#S	3 3/4"	4 7/8"	2 1/8"
R29	3" ----- 150#	4 1/2"	5 1/4"	3 1/8"
R31	3" ----- 300/600/900#S	4 7/8"	6 1/8"	3 1/8"
R35	3" ----- 1500#	5 3/8"	6 5/8"	3 1/8"
R36	4" ----- 150#	5 7/8"	6 3/4"	4 1/8"
R37	4" ----- 300/600/900#S	5 7/8"	7 1/8"	4 1/8"
R39	4" ----- 1500#	6 3/8"	7 5/8"	4 1/8"
R43	6" -----150#	7 5/8"	8 5/8"	6 1/8"
R45	6" ----- 300/600/900#S	8 5/16"	9 1/2"	6 1/8"
R46	6" ----- 1500#	8 5/16"	9 3/4"	6 1/8"
R48	8" ----- 150#	9 3/4"	10 3/4"	8"
R49	8" ----- 300/600/900#S	10 5/8"	12 1/8"	8"
R50	8 ----- 1500#	10 5/8"	12 1/2"	8"
R52	10" ----- 150#	12"	13"	10 1/8"
R53	10" ----- 300/600/900#S	12 3/4"	14 1/4"	10 1/8"
R54	10" ----- 1500#	12 3/4"	14 5/8"	10 1/8"
R56	12" ----- 150#	15"	16"	12"
R57	12" ----- 300/600/900#S	15"	16 1/2"	12"
R58	12" ----- 1500#	15"	17 1/4"	12"